

Professor: Luiz Felipe Oliveira

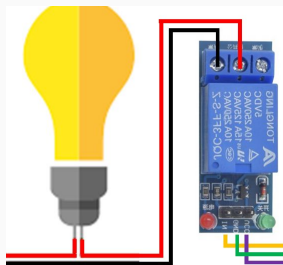
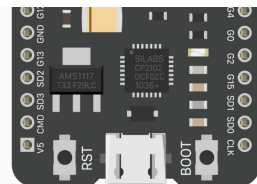
ESP32 Station Webserver

WIFI MODE
STATION

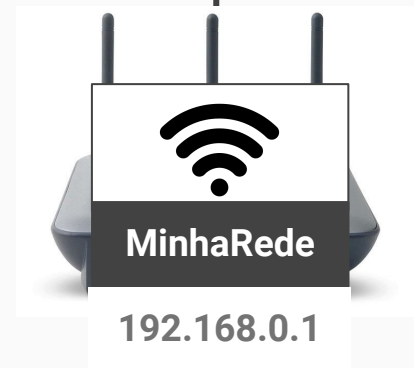
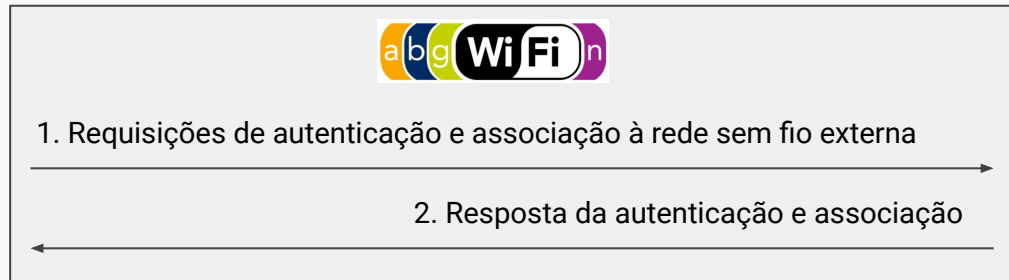
LOCAL



192.168.0.10



WIFI
MODE
Station





Parte 1: Configuração de Rede;

Parte 2: Desenvolvimento do Backend;

Parte 1: Configuração de Rede;

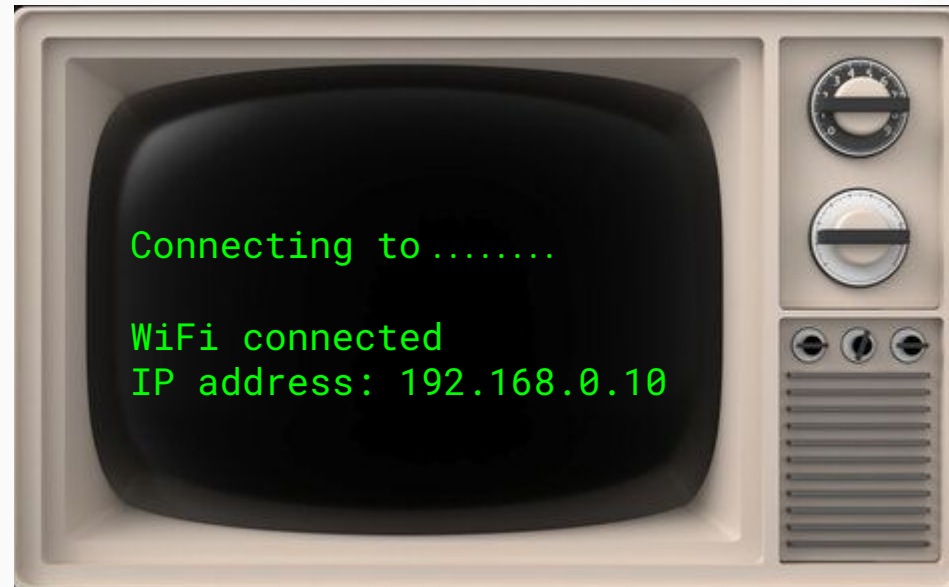
Código para Conexão à Rede Sem Fio (simples)

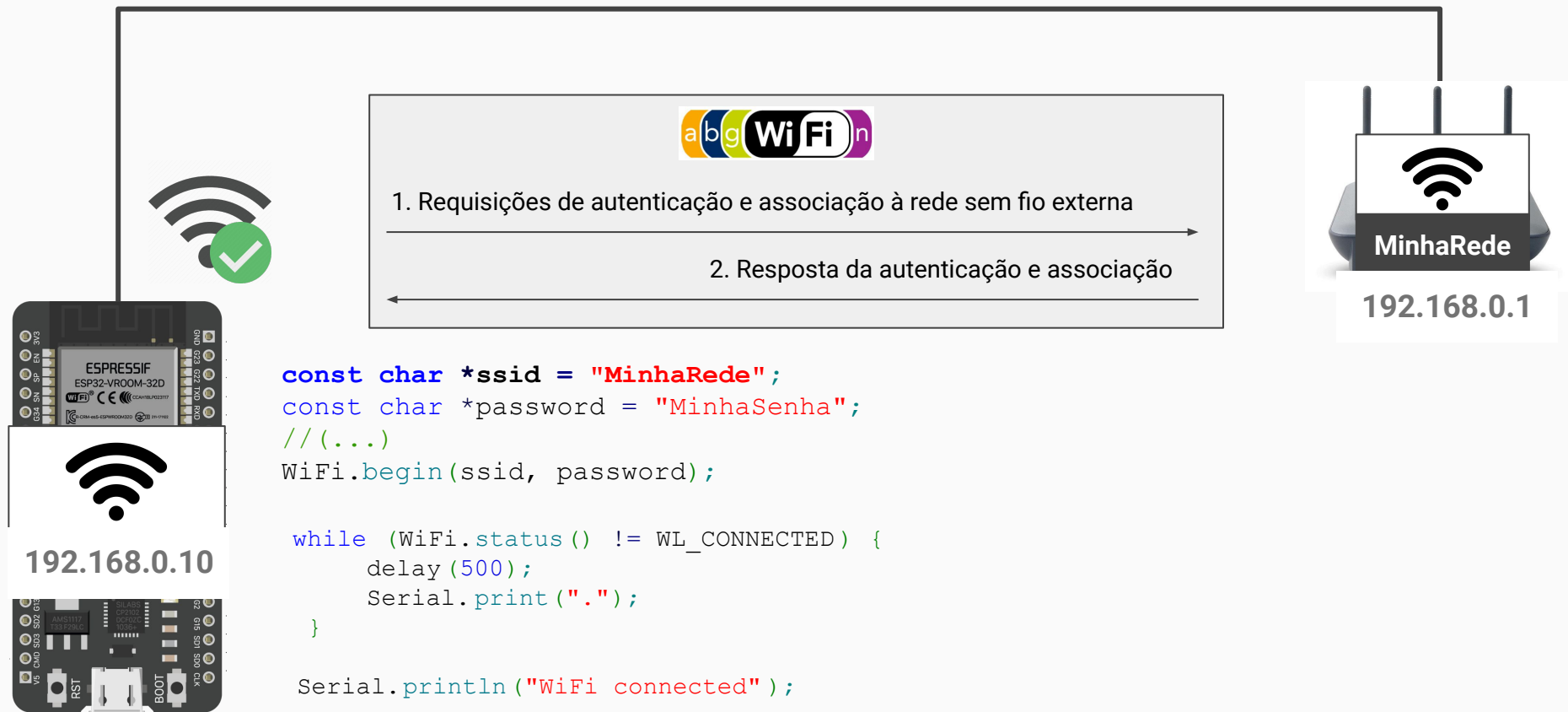
```
//(...)
//Configura o nome da rede sem fio que se deseja conectar
const char *ssid = "MinhaRede";
//Configura a senha rede sem fio que se deseja conectar
const char *password = "MinhaSenha";
//(...)
void setup(void) {
//(...)
//Configura a conexão à rede sem fio
Serial.println();
Serial.print("Connecting to ");
Serial.println(ssid);

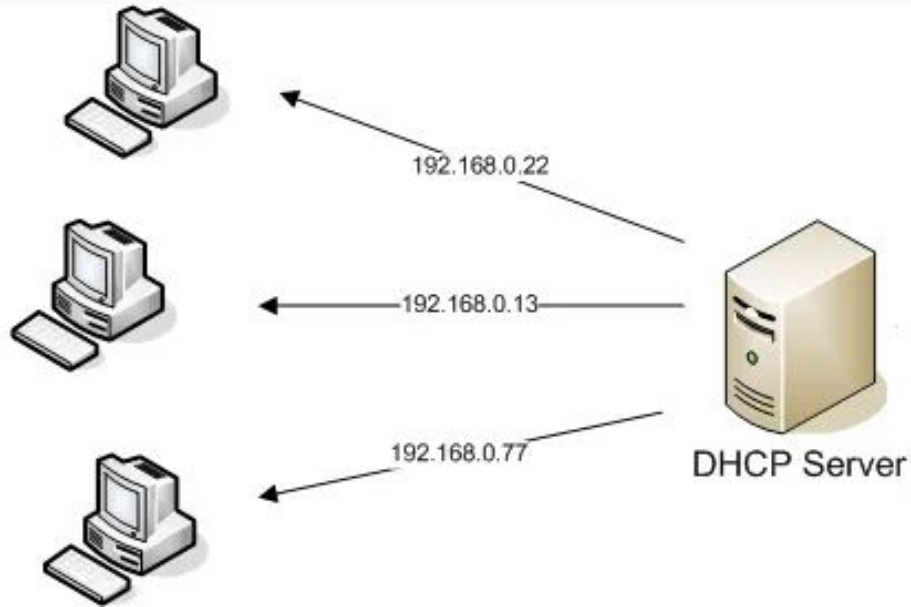
WiFi.begin(ssid, password);

while (WiFi.status() != WL_CONNECTED) {
    delay(500);
    Serial.print(".");
}

Serial.println("");
Serial.println("WiFi connected");
Serial.println("IP address: ");
Serial.println(WiFi.localIP());
```








```
IPAddress local_IP(192, 168, 31, 115);
IPAddress gateway(192, 168, 31, 1);
IPAddress subnet(255, 255, 0, 0);
IPAddress primaryDNS(8, 8, 8, 8); //opcional
IPAddress secondaryDNS(8, 8, 4, 4); //opcional

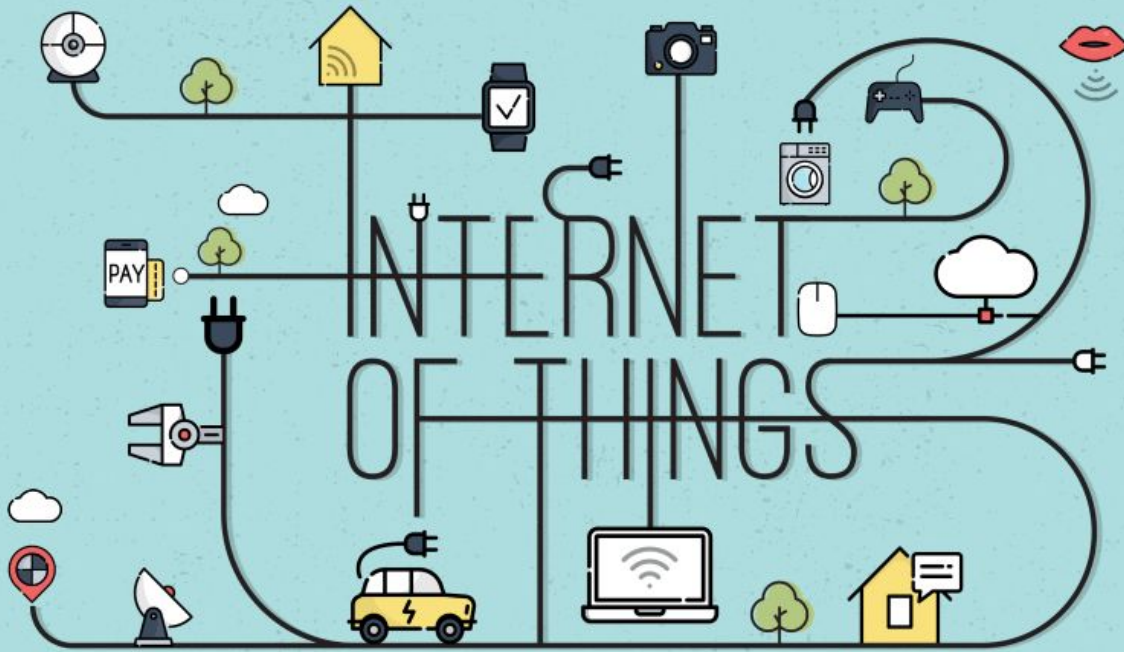
if (!WiFi.config(local_IP, gateway, subnet, primaryDNS, secondaryDNS)) {
    Serial.println("STA Failed to configure");
}

Serial.print("Connecting to ");
Serial.println(ssid);

WiFi.begin(ssid, password);
```

```
while (WiFi.status() != WL_CONNECTED) {  
    delay(500);  
    Serial.print(".");  
}
```

```
Serial.println("");  
Serial.println("WiFi connected!");  
Serial.print("IP address: ");  
Serial.println(WiFi.localIP());  
Serial.print("ESP Mac Address: ");  
Serial.println(WiFi.macAddress());  
Serial.print("Subnet Mask: ");  
Serial.println(WiFi.subnetMask());  
Serial.print("Gateway IP: ");  
Serial.println(WiFi.gatewayIP());  
Serial.print("DNS: ");  
Serial.println(WiFi.dnsIP());
```



Professor: Luiz Felipe Oliveira

Dúvidas